

SHELBURNE COMMUNITY SCHOOL

CHAMPLAIN VALLEY UNION HIGH SCHOOL



2015/2016 Budget Hearing
January 13, 2015
Shelburne School Board
CVU School Board

AGENDA

- Introduction
- Overview
- Mission Statement
- Shelburne Community School
 - * Budget Overview & History
 - * Proposed Additions / Reductions
 - Enrollment History and Class Size
 - * Articles
- Champlain Valley Union High School
 - * Academic Results
 - * Enrollment
 - * Budget Overview & Planned Reductions
 - * School Program
 - * Budget History
 - * Articles
- Summary
- Questions

NOTE: for more detail visit:

www.cssu.org, www.scsvt.org & www.cvuhs.org

OVERVIEW

FY 16 Proposed Budgets:

SCS	\$12,999,947	4.89%	increase from 2014/15
CVU	\$21,983,502	-1.87%	decrease from 2014/15

FY 16 Tax Rate Outlooks:

Homestead:

SCS/Pre K-8	\$1.0193		
CVU (Draft)	<u>\$0.4889</u>		
Total	\$1.5082	+3.97%	

Homestead (Income Sensitive**):

SCS/Pre K	1.95%		
CVU	<u>0.93%</u>		
Total	2.88%	+8.7%	

Non Homestead \$1.56 +2.63%

** Residents with household income up to \$97,000 may be eligible

• Tax Rate Outlooks: preliminary state tax rates used, SUBJECT TO CHANGE

The CSSU mission is to develop citizens who

LEARN

actively and collaboratively

THINK

creatively and critically

LIVE

responsibly and respectfully

CONTRIBUTE

positively to their community

PURSUE EXCELLENCE

in their individual interests

What will it cost to achieve this mission next year?

School Year	Proposed Budget	% Change	Cost per Equalized Pupil	% Change
2015/16	\$12,999,947	+ 4.89%	\$13,988	+3.07 %

2015/16 Budget Factors driving increase:

- Increasing student population
- Addition of 1 Planning Room Behavioral Specialist
- Addition of English Language Learner (ELL) Summer Program
- Addition of a Middle School Track Program
- Increased funding for Connecting Youth (CY) Mentoring Program
- Contracted 3.25% salary increase for professional employees
- 4.5% Health Care cost increases for all participating employees
- Inflationary growth of all supplies, materials, utilities, etc.

Budget for 2014-15 (FY15)

Reductions to maintain equalized per pupil spending of less than a 3% increase

- Reduction of 0.3FTE Physical Education Teacher
- Reduction of 1 Classroom Support (Team) Paraprofessional
- Reduction of stipends for calendar/handbook, testing coordinator, Unified Sports, Scripps Spelling and GeoBee
- Reductions in
 - instructional and office supplies
 - equipment
 - disposal, gas, electricity

FY 16 Budget Reductions

Where does this fit in recent history?

School Year	PreK – 8 Budget	% Change	Cost per Equalized Pupil	% Change
2009/10	\$11,220,491	0 %	\$12,473	1.6 %
2010/11	\$11,220,491	0 %	\$12,803	2.6 %
2011/12	\$11,173,917	- 0.4 %	\$12,658	-1.1 %
2012/13	\$11,496,440	+2.89 %	\$13,052	3.1 %
2013/14	\$11,995,493	+4.34 %	\$13,458	3.1 %
2014/15	\$12,363,989	+3.32 %	\$13,570	0.8 %
2015/16	\$12,999,947	+4.89%	\$13,988	3.07%

Last Seven Year Budget Summary

What would this mean for Shelburne taxes?

FY 2016	Amount	% Change
Baseline Budget	\$12999,947	4.89%
Anticipated Revenue	\$2,147,274	3.81%
Equalized Pupils	775.86	2.0%
Spending/Pupil	\$13,988	3.07%
CLA	98.54	-1.2%
Estimated Tax Rate	\$1.0193	6.31%

SCS K-8 Enrollment History

School Year	Enrollment	Yearly Change
2007/8	773	
2008/9	751	- 3.1 %
2009/10	737	- 1.7 %
2010/11	741	+ 0.5 %
2011/12	740	- 0.1%
2012/13	748	+1.3 %
2013/14	741	- 0.6 %
2014/15	747	+0.8%

*Enrollment data
as of 11/1/2014*

SCS Population Stable / Growing in K/1 grades

SCS Class Size Data for this year and next

Grade Level	Current # ^{'s}	Class Size		2015/16 # ^{'s}	15/16 Size	Board Target	CSSU Averages (Low / High)
EEE	19 / 2 Tchrs	9.5					
K	79 / 5 Tchrs	15.8		75 / 5 Tchrs	15	15 - 17	16.8 (14 / 18)
1	87 / 5 Tchrs	17.4		79 / 4 Tchrs	19.8	17 - 20	18 (17 / 20)
2	77 / 4 Tchrs	19.3		87 / 5 Tchrs	17.4	17 - 20	19 (18 / 22)
3	88 / 4 Tchrs	22		77 / 4 Tchrs	19.3	17 - 20	19.6 (18 / 21)
4	84 / 4 Tchrs	21		88 / 4 Tchrs	22	18 - 21	19.3 (18 / 21)
5	79 / 4 Tchrs	19.8		84 / 4 Tchrs	21	18 - 21	22.7 (19 / 28)
6	82 / 4 Tchrs	20.5		79 / 4 Tchrs	19.8	20 - 23	22.8 (15 / 26)
7	98 / 4 Tchrs	24.5		82 / 4 Tchrs	20.5	20 - 23	22.1 (16 / 27)
8	73 / 4 Tchrs	18.3		98 / 4 Tchrs	24.5	20 - 23	22.5 (17 / 27)

*Enrollment data
as of 1/04/2015*

SCS Budget 2015/2016

ARTICLE VII: Shall the voters of the Shelburne Town School District authorize the Board of School Directors to borrow money by issuance of notes not in excess of One Hundred One Thousand Dollars (\$101,000) for the purpose of purchasing one (1) school bus to be financed over five years?

SCS Budget 2015/2016

ARTICLE VIII: Shall the voters of the Shelburne Town School District authorize the Board of School Directors to assign One Hundred Sixty-Five Thousand Dollars (\$165,000) of the school district's current fund balance as revenue for the 2015-2016 school year, and assign the remaining balance as revenue for future budgets?

ARTICLE VI

Shall general obligations bonds or notes of Shelburne Town School District in an amount not to exceed Eleven Million, Two Hundred Thousand Dollars (\$11,200,000), subject to reduction from available state construction grants in aid and appropriations, be issued for the purpose of financing the District's share of the cost of making certain public improvements, viz: Roofing replacement, Windows upgrades and D&E Wing renovations for Shelburne Community School. State funds may not be available at the time this project is otherwise eligible to receive state school construction aid. The District is responsible for all costs incurred in connection with any borrowing done in anticipation of state school construction aid.

SHELBURNE COMMUNITY SCHOOL **BUILDING** OUR **FUTURE**



December 2014
Renovation Project Update
IMPROVING
EDUCATION • SAFETY • EFFICIENCY

Scope of work within 11.2 Million Bond

D & E WING RENOVATION:

- complete renovation of twenty classrooms currently serving middle school and kindergarten in the 1967 D and E wings
- a new central corridor with fully enclosed, enlarged classroom spaces, small group instruction rooms, “Science and Exploration-Maker” spaces and intervention spaces will be rebuilt within the existing walls
- original single-pane windows and exterior doors will be replaced with efficient, insulated thermal ones and 1967 HVAC system completely replaced
- original HVAC system is also 1967 vintage and currently occupies 2 full classrooms spaces with loud fans and motors that interfere with instruction



ROOF REPLACEMENT:

- complete a full roof replacement for the entire 120,000 sq ft. building
- limited structural reinforcement to address snow load concerns
- increased insulation to gain some significant energy savings
- design improvements to address pooling and drainage issues

CODE-RELATED UPGRADES:

- fire alarm, sprinklers, and security system will be upgraded to meet current codes
- access for students with disabilities will be improved
- utility and technology infrastructure will be completely retrofitted

Specifics of Bond Proposal

SHELBURNE
COMMUNITY SCHOOL
BUILDING
OUR
FUTURE



Using the following assumptions as of
10/2014:

- \$11,200,000 Borrowing
- paid off in 20 years
- using rates supplied by Vermont Municipal Bond Bank
- Principal and interest payment in 2nd year used.
- reduced overall expense by the payoff of existing debt (\$120,000 principal payment)

Annual increase increase in P&I....
\$833,120

Annual increase in homestead tax rate..
\$.0789

Annual increase in taxes on a \$400,000
assessed value home is approx. \$300

	Preferred Option with Code Triggered Upgrades
Construction Cost	\$9M
Soft Costs (25%)*2	\$2.2M
Total Project Cost	\$11.2M

Notes:

1. Estimates include a phasing allowance (2% of construction cost) and Abatement Allowance (\$350,000)
2. Soft Costs include Owner's Contingency, Insurance, A/E Fees, Legal fees, Clerk fees.
3. Combining "Stand-Alone" projects may result in triggering code upgrades and related cost increases

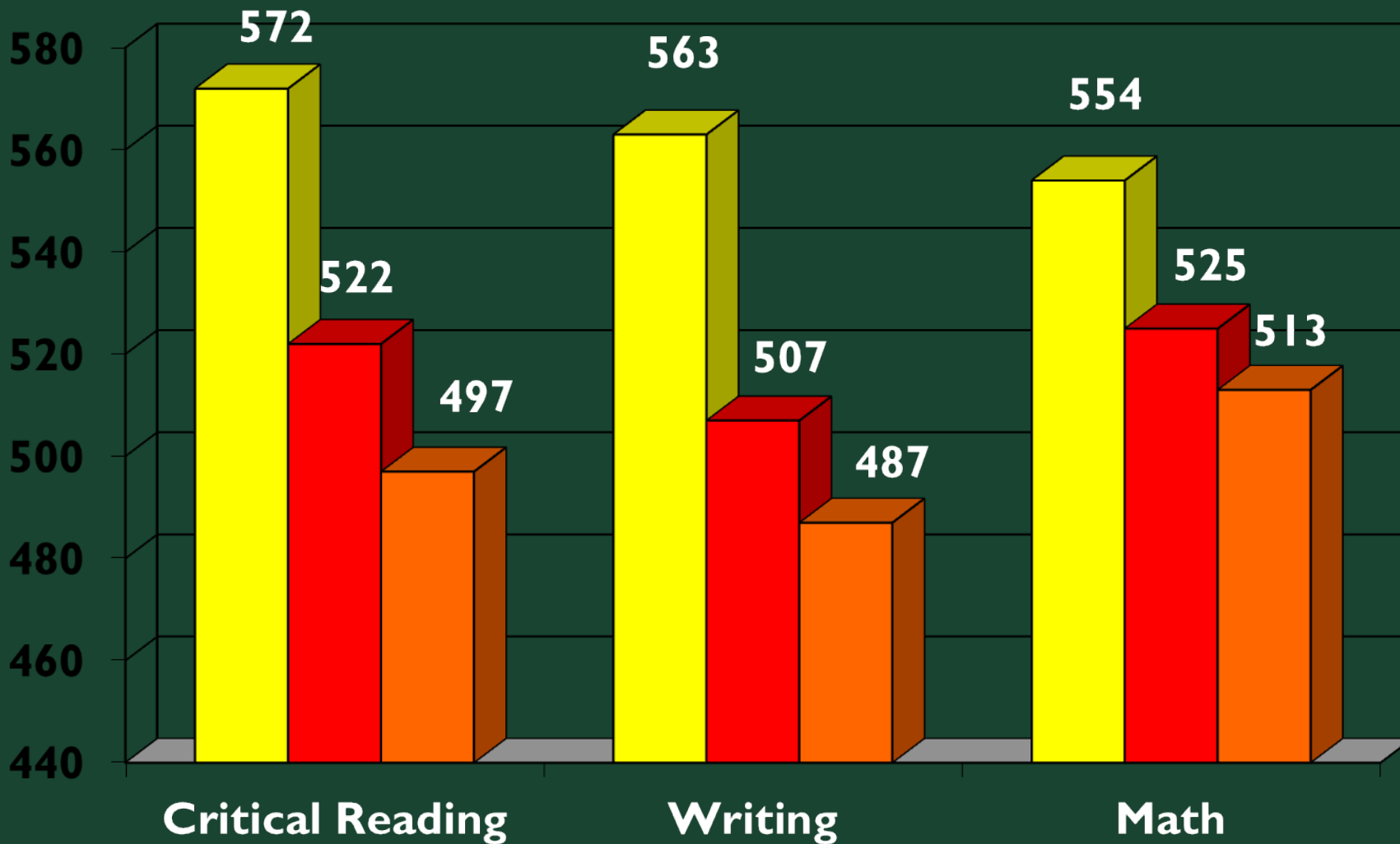


2015-16 BUDGET

Champlain Valley Union High School



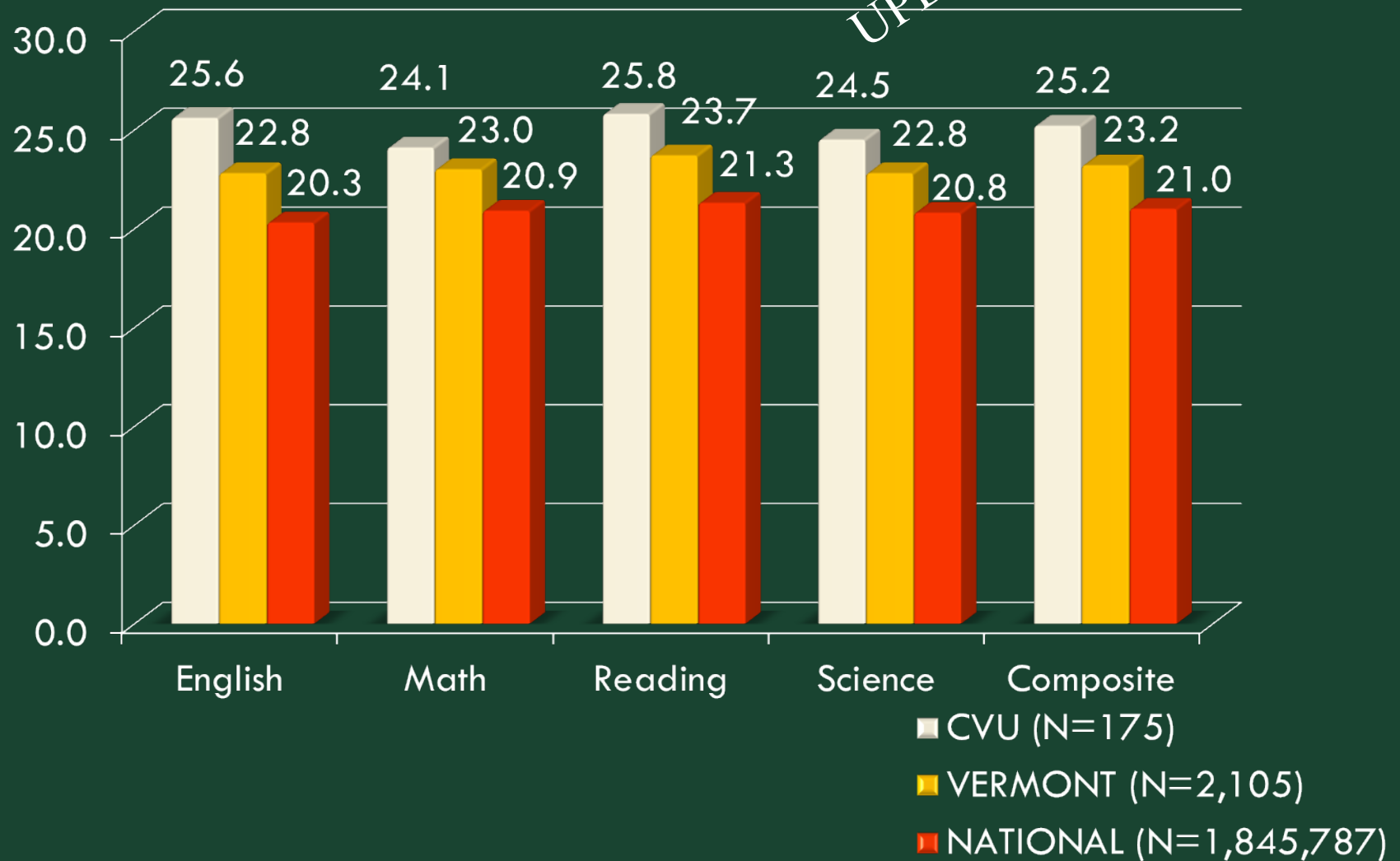
2014 SAT RESULTS



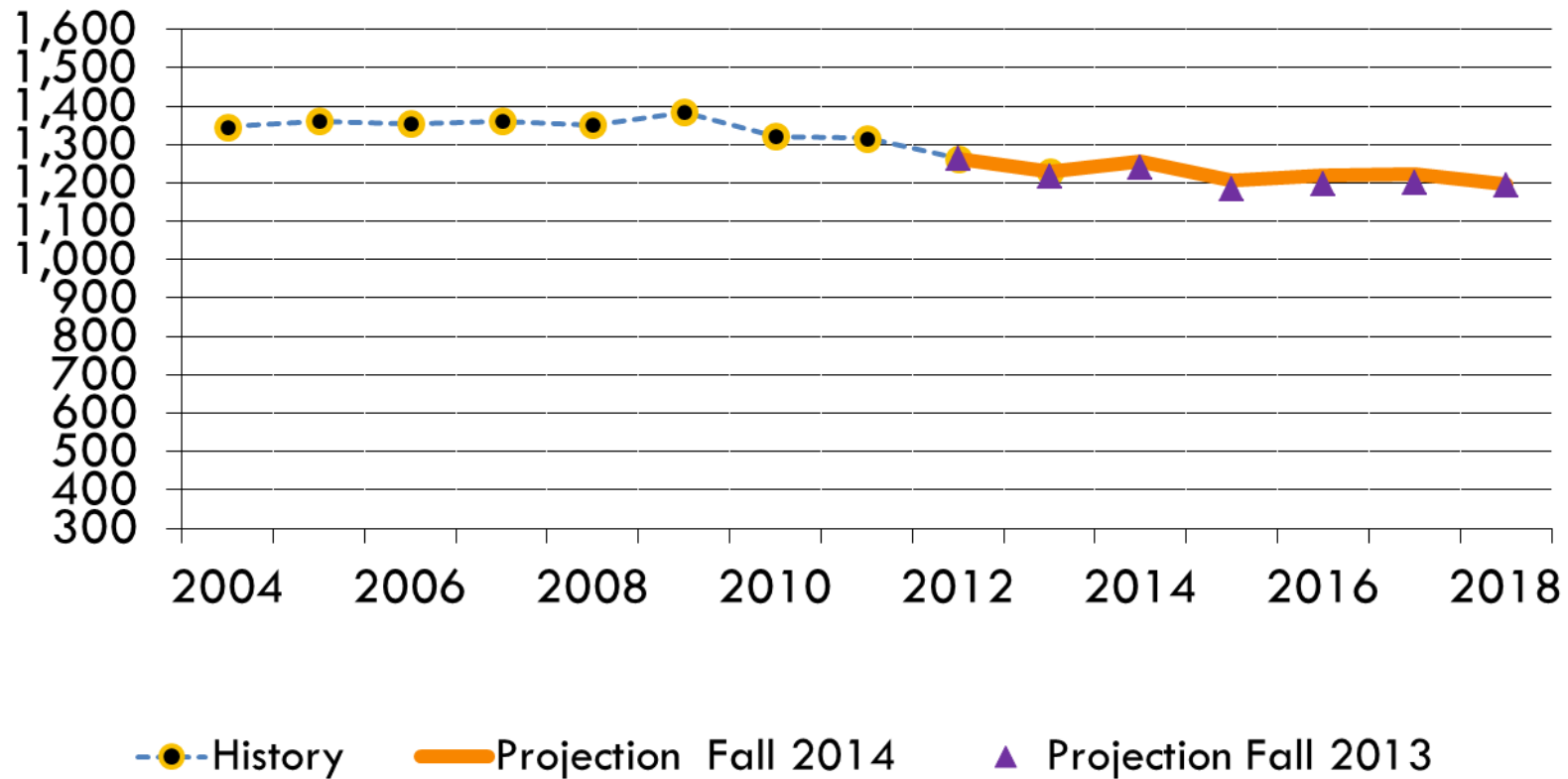
■ CVU '13-14 (N=216)
■ VT '13-14 (N=4,590)
■ Nat'l '13-14 (N=1,672,395)

ACT Scores 2014

UPDATED JAN 2015



CVU HIGH SCHOOL ENROLLMENT (9 - 12)



CVU PROPOSED BUDGET 2015/2016

<i>2014/2015</i>	<i>Budget</i>	<i>\$21,983,502</i>
<i>2015/2016</i>	<i>Proposed Budget</i>	<i>\$22,403,334</i>
		<i>1.87% decrease</i>

Drivers:

Salaries and Benefits

Special Education



CVU INITIATIVES

UPDATED JAN 2015

- Standards-Based Instruction & Assessment
 - Common Core & Local standards (ESLs)
- FLEXIBLE PATHWAYS
 - Variety of ways to learn and demonstrate learning
 - Dual enrollment
 - Online learning
 - Independent studies
 - Internships, apprenticeships, job shadows
- PERSONALIZED LEARNING PLANS

CVU Proposed Budget Overview

FY 2015	Amount	% Change
Proposed Budget	22,983,502	-1.87%
Anticipated Revenue	3,608,986	-17.44%
Equalized Pupils	1,293.45	+1.91%
Spending/Pupil	\$14,206	1.71%
CLA	98.54%	-1.16%
Estimated Tax Rate	\$.4889	-.6%

CVU PROPOSED BUDGET 2014/2015

Draft Articles for Voter Consideration:

ARTICLE IX: Shall the voters of the Champlain Valley Union High School District No. 15 authorize the Board of School Directors to borrow money by issuance of notes not in excess of One Hundred Sixty-Seven Thousand Dollars (\$167,000) for the purpose of purchasing two (2) school buses?

CVU PROPOSED BUDGET 2014/2015

Draft Articles for Voter Consideration:

ARTICLE X: Shall Champlain Valley Union School District No. 15 allocate its current fund balance, without effect upon the District tax levy, as follows: assign Two Hundred Fourteen Thousand Dollars (\$214,000) of the school district's current fund balance as revenue for the 2015-2016 operating budget, and assign the remaining balance as revenue for future budgets?

CVU PROPOSED BUDGET 2014/2015

Draft Articles for Voter Consideration:

ARTICLE VIII: Shall general obligations bonds or notes of Champlain Valley Union High School District No. 15 in an amount not to exceed Seven Hundred Thousand Dollars (\$700,000), subject to reduction from available state construction grants in aid and appropriations, be issued for the purpose of financing the District's share of the cost of making certain public improvements, viz: athletic field improvements for Champlain Valley Union High School? **State funds may not be available at the time this projects is otherwise eligible to receive state school construction aid. The District is responsible for all costs incurred in connection with any borrowing done in anticipation of state school construction aid.**

SUMMARY - TAX IMPLICATIONS

	\$250,000 Home			\$400,000 Home		
	<u>14/15</u>	<u>15/16</u>	<u>Inc/Dec</u>	<u>14/15</u>	<u>15/16</u>	<u>Inc/Dec</u>
Shelburne SD	\$2397	\$2548	+\$151	\$4315	\$4587	+\$272
CVU HS	\$1230	\$1225	-\$5	\$2213	\$2205	-\$8

Income Sensitivity: @\$85,000 of income

Tax payment capped at :	<u>14/15</u>		<u>15/16</u>	
Shelburne SD	1.76%	\$1496	1.95%	\$1658
CVU HS	.90%	\$ 765	.93%	\$ 791

VOTE MARCH 3rd

done